

Version 3 Last updated 3 November 2021

# ab229382 Mouse FGF-21 CatchPoint® SimpleStep ELISA® Kit

For the quantitative measurement of FGF-21 in mouse serum, plasma, and cell culture supernatants.

This product is for research use only and is not intended for diagnostic use.

## Table of Contents

1. Overview	1
2. Protocol Summary	2
3. Precautions	3
4. Storage and Stability	3
5. Limitations	4
6. Materials Supplied	4
7. Materials Required, Not Supplied	5
8. Technical Hints	5
9. Reagent Preparation	7
10. Standard Preparation	8
11. Sample Preparation	10
12. Plate Preparation	11
13. Assay Procedure	12
14. Calculations	14
15. Typical Data	15
16. Typical Sample Values	17
17. Assay Specificity	21
18. Species Reactivity	22
19. Troubleshooting	23
20. Notes	24
<b>Technical Support</b>	<b>26</b>

## 1. Overview

FGF-21 *in vitro* CatchPoint SimpleStep ELISA (Enzyme-Linked Immunosorbent Assay) kit is designed for the quantitative measurement of FGF-21 protein in mouse serum, plasma, and cell culture supernatants.

The CatchPoint SimpleStep ELISA employs an affinity tag labeled capture antibody and a reporter conjugated detector antibody which immunocapture the sample analyte in solution. This entire complex (capture antibody/analyte/detector antibody) is in turn immobilized via immunoaffinity of an anti-tag antibody coating the well. To perform the assay, samples or standards are added to the wells, followed by the antibody mix. After incubation, the wells are washed to remove unbound material. CatchPoint HRP Development Solution containing the Stoplight Red Substrate is added. During incubation, the substrate is catalyzed by HRP generating a fluorescent product. Signal is generated proportionally to the amount of bound analyte and the intensity is measured in a fluorescence plate reader at 530/570/590 nm Excitation/Cutoff/Emission.

FGF-21 is a secreted protein, a member of a large FGF gene family. FGF-21 stimulates glucose uptake in differentiated adipocytes via the induction of glucose transporter SLC2A1/GLUT1 expression but not via SLC2A4/GLUT4 expression. FGF-21 activity probably requires the presence of KLB.

## 2. Protocol Summary

Prepare all reagents, samples, and standards as instructed



Add 50  $\mu$ L standard or sample to appropriate wells



Add 50  $\mu$ L Antibody Cocktail to all wells



Incubate at room temperature for 1 hour



Aspirate and wash each well three times with 350  $\mu$ L 1X Wash Buffer  
PT



Add 100  $\mu$ L of prepared CatchPoint HRP Development Solution to  
each well and incubate for 10 minutes



Read fluorescence at Ex/Cutoff/Em 530/570/590 nm

### 3. Precautions

**Please read these instructions carefully prior to beginning the assay.**

- All kit components have been formulated and quality control tested to function successfully as a kit.
- We understand that, occasionally, experimental protocols might need to be modified to meet unique experimental circumstances. However, we cannot guarantee the performance of the product outside the conditions detailed in this protocol booklet.
- Reagents should be treated as possible mutagens and should be handled with care and disposed of properly. Please review the Safety Datasheet (SDS) provided with the product for information on the specific components.
- Observe good laboratory practices. Gloves, lab coat, and protective eyewear should always be worn. Never pipet by mouth. Do not eat, drink or smoke in the laboratory areas.
- All biological materials should be treated as potentially hazardous and handled as such. They should be disposed of in accordance with established safety procedures.

### 4. Storage and Stability

**Store kit at +4°C immediately upon receipt. Kit has a storage time of 1 year from receipt, providing components have not been reconstituted.**

Refer to list of materials supplied for storage conditions of individual components. Observe the storage conditions for individual prepared components in the Materials Supplied section.

## 5. Limitations

- Assay kit intended for research use only. Not for use in diagnostic procedures.
- Do not mix or substitute reagents or materials from other kit lots or vendors. Kits are QC tested as a set of components and performance cannot be guaranteed if utilized separately or substituted.
- All data, except Typical Standard Curve and Sensitivity were collected using the colorimetric version of this kit (ab212160).

## 6. Materials Supplied

Item	Quantity	Storage Condition
Mouse FGF-21 Capture Antibody 10X	600 µL	+4°C
Mouse FGF-21 Detector Antibody 10X	600 µL	+4°C
Mouse FGF-21 Lyophilized Recombinant Protein	2 Vials	+4°C
Antibody Diluent CPR	6 mL	+4°C
Wash Buffer PT 10X	20 mL	+4°C
Stoptight Red Substrate Buffer	12 mL	+4°C
100X Stoptight Red Substrate	120 µL	+4°C
500X Hydrogen Peroxide (H <sub>2</sub> O <sub>2</sub> , 3%)	50 µL	+4°C
Sample Diluent NS*	50 mL	+4°C
SimpleStep Pre-Coated Black 96-Well Microplate	96 Wells	+4°C
Plate Seal	1	+4°C

\*Sample Diluent NS is provided but not necessary for this product.

## 7. Materials Required, Not Supplied

These materials are not included in the kit, but will be required to successfully perform this assay:

- Fluorescence microplate reader Ex/Cutoff/Em 530/570/590 nm.
- Method for determining protein concentration (BCA assay recommended).
- Deionized water.
- Multi- and single-channel pipettes.
- Tubes for standard dilution.
- Plate shaker for all incubation steps.
- Optional: Phenylmethylsulfonyl Fluoride (PMSF) (or other protease inhibitors).

## 8. Technical Hints

- Samples generating values higher than the highest standard should be further diluted in the appropriate sample dilution buffers.
- Avoid foaming or bubbles when mixing or reconstituting components.
- Avoid cross contamination of samples or reagents by changing tips between sample, standard and reagent additions.
- Ensure plates are properly sealed or covered during incubation steps.
- Complete removal of all solutions and buffers during wash steps is necessary to minimize background.
- As a guide, typical ranges of sample concentration for commonly used sample types are shown below in Sample Preparation (section 11).
- All samples should be mixed thoroughly and gently.
- Avoid multiple freeze/thaw of samples.
- Incubate ELISA plates on a plate shaker during all incubation steps.
- When generating positive control samples, it is advisable to change pipette tips after each step.

- The incubation times provided in this protocol were optimized for fastest results with good signal. It is possible to increase the signal with longer incubation times, further optimization might be necessary.
- Keep in mind any RFU values shown are relative, NOT absolute. RFU from one plate reader are not comparable to another, especially if different make or model.
- To avoid high background always add samples or standards to the well before the addition of the antibody cocktail.
- This kit is sold based on number of tests. A 'test' simply refers to a single assay well. The number of wells that contain sample, control or standard will vary by product. Review the protocol completely to confirm this kit meets your requirements. Please contact our Technical Support staff with any questions.



## 9. Reagent Preparation

- Equilibrate all reagents to room temperature (18-25°C) prior to use. The kit contains enough reagents for 96 wells. The sample volumes below are sufficient for 48 wells (6 x 8-well strips); adjust volumes as needed for the number of strips in your experiment.
- Prepare only as much reagent as is needed on the day of the experiment. Capture and Detector Antibodies have only been tested for stability in the provided 10X formulations.

### 9.1 1X Wash Buffer PT:

Prepare 1X Wash Buffer PT by diluting Wash Buffer PT 10X with deionized water. To make 50 mL 1X Wash Buffer PT combine 5 mL Wash Buffer PT 10X with 45 mL deionized water. Mix thoroughly and gently.

### 9.2 Antibody Cocktail:

Prepare Antibody Cocktail by diluting the capture and detector antibodies in Antibody Diluent CPR. To make 3 mL of the Antibody Cocktail combine 300  $\mu$ L 10X Capture Antibody and 300  $\mu$ L 10X Detector Antibody with 2.4 mL Antibody Diluent CPR. Mix thoroughly and gently.

### 9.3 CatchPoint HRP Development Solution

Just prior to use prepare CatchPoint HRP Development Solution by diluting the 100X Stoplight Red Substrate and the 500X Hydrogen Peroxide in Stoplight Red Substrate Buffer.

For example, to make 6 mL of the CatchPoint HRP Development Solution combine 60  $\mu$ L 100X Stoplight Red Substrate and 12  $\mu$ L of 500X Hydrogen Peroxide with 5.928 mL Stoplight Red Substrate Buffer. Mix thoroughly and gently.

## 10. Standard Preparation

- Always prepare a fresh set of standards for every use.
- Discard working standard dilutions after use as they do not store well.
- The following section describes the preparation of a standard curve for duplicate measurements (recommended).

**10.1 IMPORTANT:** If the protein standard vial has a volume identified on the label, reconstitute the FGF-21 by adding that volume of Sample Diluent NS indicated on the label. Alternatively, if the vial has a mass identified, reconstitute the FGF-21 standard by adding 500  $\mu\text{L}$  Sample Diluent NS. Hold at room temperature for 10 minutes and mix gently. This is the 8,000 pg/mL **Stock Standard** Solution.

**10.2** Label 14 tubes, Standards 1– 14.

**10.3** Add 120  $\mu\text{L}$  of Sample Diluent NS into tube number 1 and 150  $\mu\text{L}$  of Sample Diluent NS into numbers 2-14.

**10.4** Use the Stock Standard to prepare the following dilution series. Standard #14 contains no protein and is the Blank control.

Standards will be added to the plate in step 13.3. If desired all 14 standards can be used for a full standard curve.

Alternatively, to commit fewer wells to the standard curve, select a subset of at least 7 standards plus the blank control. If 7 standards are desired, we recommend standards #3-9.

Standard #	Dilution Sample	Volume to Dilute (µL)	Volume of Diluent (µL)	Starting Conc. (pg/mL)	Final Conc. (pg/mL)
1	Stock	180	120	8,000	4,800
2	Standard#1	150	150	4,800	2,400
3	Standard#2	150	150	2,400	1,200
4	Standard#3	150	150	1,200	600
5	Standard#4	150	150	600	300
6	Standard#5	150	150	300	150
7	Standard#6	150	150	150	75
8	Standard#7	150	150	75	37.5
9	Standard#8	150	150	37.5	18.8
10	Standard#9	150	150	18.8	9.4
11	Standard#10	150	150	9.4	4.7
12	Standard#11	150	150	4.7	2.3
13	Standard#12	150	150	2.3	1.2
14	None	0	150	0	0

## 11. Sample Preparation

Typical Sample Dynamic Range	
Sample Type	Range
Mouse Plasma - Heparin	3.13 – 50%
Mouse Plasma - EDTA	3.13 – 50%
Mouse Plasma - Citrate	3.13 – 50%
Mouse Serum	3.13 – 50%
L-929 Cell Culture Supernatant	6.25 – 100%
Mouse Plasma - Heparin	3.13 – 50%

### 11.1 Plasma:

Collect plasma using citrate, EDTA or heparin. Centrifuge samples at 2,000 x g for 10 minutes. Dilute plasma (heparin) samples at least 2 fold in Sample Diluent NS and assay. Plasma (EDTA, citrate) samples can be assayed without dilution. If needed, dilute plasma (EDTA, citrate) samples in Sample Diluent NS and assay. Store un-diluted plasma samples at -20°C or below for up to 3 months. Avoid repeated freeze-thaw cycles.

### 11.2 Serum:

Samples should be collected into a serum separator tube. After clot formation, centrifuge samples at 2,000 x g for 10 minutes and collect serum. Serum samples can be assayed without dilution. If needed, dilute samples in Sample Diluent NS and assay. Store un-diluted serum at -20°C or below. Avoid repeated freeze-thaw cycles.

### 11.3 Cell Culture Supernatants:

Centrifuge cell culture media at 2,000 x g for 10 minutes to remove debris. Collect supernatants. Cell culture supernatants can be assayed without dilution. If needed, dilute samples in Sample Diluent NS and assay. Store un-diluted samples at -20°C or below. Avoid repeated freeze-thaw cycles.

## 12. Plate Preparation

- The 96 well plate strips included with this kit are supplied ready to use. It is not necessary to rinse the plate prior to adding reagents.
- Unused plate strips should be immediately returned to the foil pouch containing the desiccant pack, resealed and stored at 4°C.
- For each assay performed, a minimum of two wells must be used as the zero control.
- For statistical reasons, we recommend each sample should be assayed with a minimum of two replicates (duplicates).
- Differences in well fluorescence or "edge effects" have not been observed with this assay.
- Ensure plate and all materials are equilibrated to room temperature during use.
- Cover the plate with a plate seal during incubation steps.

## 13. Assay Procedure

- Equilibrate all materials and prepared reagents to room temperature prior to use.
- We recommend that you assay all standards, controls and samples in duplicate.
- Prepare all reagents, working standards, and samples as directed in the previous sections.

- 13.1** Prepare all reagents, working standards, and samples as directed in the previous sections.
- 13.2** Remove excess microplate strips from the plate frame, return them to the foil pouch containing the desiccant pack, reseal and return to 4°C storage.
- 13.3** Add 50 µL of all sample or standard to appropriate wells.
- 13.4** Add 50 µL of the Antibody Cocktail to each well.
- 13.5** Seal the plate and incubate for 1 hour at room temperature on a plate shaker set to 400 rpm.
- 13.6** Wash each well with 3 x 350 µL 1X Wash Buffer PT. Wash by aspirating or decanting from wells then dispensing 350 µL 1X Wash Buffer PT into each well. Wash Buffer PT should remain in wells for at least 10 seconds. Complete removal of liquid at each step is essential for good performance. After the last wash invert the plate and tap gently against clean paper towels to remove excess liquid.
- 13.7** Add 100 µL of prepared CatchPoint HRP Development Solution to each well and incubate for 10 minutes in the dark on a plate shaker set to 400 rpm. Further optimization of incubation time vs signal strength can be performed if needed.
- 13.8** Record the fluorescence at Ex/Cutoff/Em 530/570/590 nm. If using a Molecular Devices' plate reader supported by SoftMax® Pro software, a preconfigured protocol for these CatchPoint SimpleStep ELISA Kits is available with all the protocol and analysis settings at [www.softmaxpro.org](http://www.softmaxpro.org)

Mode:	Fluorescence
Instrument settings:	Endpoint
Excitation:	530 nm
Cutoff:	570 nm
Emission:	590 nm
Sensitivity:	6 flashes/read or 200ms
PMT:	Auto
Auto calibrate:	On
Read:	Top
Read Height:	1*

\*For microplate readers with Pre-Read Optimization option, the Read Height as well as Microplate Optimization is recommended before the first read.

**13.9** Analyze the data as described below.

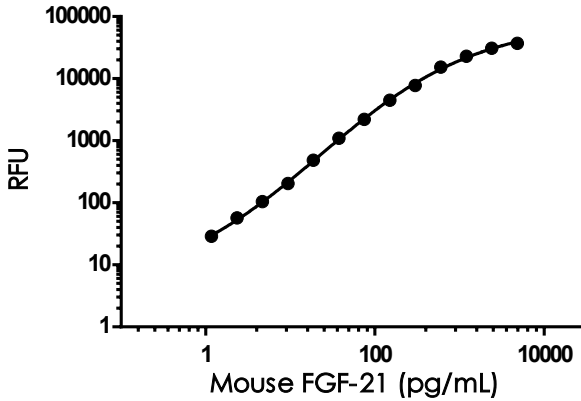
## 14. Calculations

- 14.1 Preconfigured protocols are available when using SoftMax Pro software from Molecular Devices
  - 14.2 Calculate the average fluorescence value for the blank control (zero) standards. Subtract the average blank control standard fluorescence value from all other fluorescence values.
  - 14.3 **Create a standard curve** by plotting the average blank control subtracted fluorescence value for each standard concentration (y-axis) against the target protein concentration (x-axis) of the standard. Use graphing software to draw the best smooth curve through these points to construct the standard curve.
- Δ **Note:** Most **fluorescence** reader software or graphing software will plot these values and fit a curve to the data. A four-parameter curve fit (4PL) is often the best choice; however, other algorithms (e.g. linear, semi-log, log/log, 4-parameter logistic) can also be tested to determine if it provides a better curve fit to the standard values.
- 14.4 Determine the concentration of the target protein in the sample by interpolating the blank control subtracted fluorescence **values against the standard curve**. Multiply the resulting value by the appropriate sample dilution factor, if used, to obtain the concentration of target protein in the sample.
  - 14.5 Samples generating fluorescence values greater than that of the highest standard should be further diluted and reanalyzed. Similarly, samples which measure at fluorescence values less than that of the lowest standard should be retested in a less dilute form.



## 15. Typical Data

**Typical standard curve** – data provided **for demonstration purposes only**. A new standard curve must be generated for each assay performed.



Standard Curve Measurements			
Concentration (pg/mL)	RFU		Mean RFU
	1	2	
0	24	24	24
1.2	53	53	53
2.3	59	81	70
4.7	116	143	129
9.4	217	240	229
18.8	496	519	507
37.5	1,130	1,098	1,114
75	2,242	2,224	2,233
150	4,540	4,444	4,492
300	7,823	7,765	7,794
600	15,424	15,366	15,395
1,200	22,852	23,069	22,960
2,400	30,570	31,215	30,893
4,800	36,934	37,177	37,055

**Figure 1.** Example of mouse FGF-21 standard curve in Sample Diluent NS. The FGF-21 standard curve was prepared as described in Section 10. Raw data generated on SpectraMax M4 Multi-Mode Microplate Reader is shown in the table. Background-subtracted data values (mean +/- SD) are graphed.

## 16. Typical Sample Values

### SENSITIVITY –

The calculated minimal detectable dose (MDD) is 1.0 pg/mL. The MDD was determined by calculating the mean of zero standard replicates (n=19) and adding 2 standard deviations then extrapolating the corresponding concentration.

### RECOVERY –

Three concentrations of FGF-21 recombinant protein were spiked in duplicate to the indicated biological matrix to evaluate signal recovery in the working range of the assay.

Sample Type	Average % Recovery	Range (%)
12.5% Mouse Plasma Heparin	94	88 - 104
12.5% Mouse Plasma EDTA	100	92 - 108
12.5% Mouse Plasma Citrate	101	94 - 106
12.5% Mouse Serum	103	99 - 107
50% DMEM + 10% Horse	94	91 - 97

## Linearity of Dilution

Linearity of dilution is determined based on interpolated values from the standard curve. Linearity of dilution defines a sample concentration interval in which interpolated target concentrations are directly proportional to sample dilution.

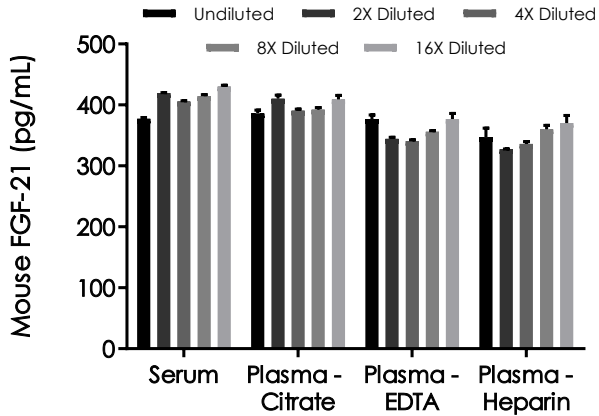
Native FGF-21 was measured in the following biological samples in a 2-fold dilution series. Sample dilutions are made in Sample Diluent NS.

Dilution Factor	Interpolated value	100% Mouse Serum	100% Mouse Plasma (Citrate)	100% Mouse Plasma (EDTA)	50% Mouse Plasma (Heparin)	100% L-292 Untreated (SN)
Undiluted	pg/mL	377.5	385.8	376.9	173.7	58.19
	% Expected value	100	100	100	100	100
2	pg/mL	209.7	205.2	172.2	81.83	30.77
	% Expected value	111	106	91	94	106
4	pg/mL	101.5	97.61	85.12	41.98	16.12
	% Expected value	108	101	90	97	111
8	pg/mL	51.79	49.03	44.52	22.47	7.451
	% Expected value	110	102	94	104	102
16	pg/mL	26.89	25.57	23.55	11.57	3.264
	% Expected value	114	106	100	107	90

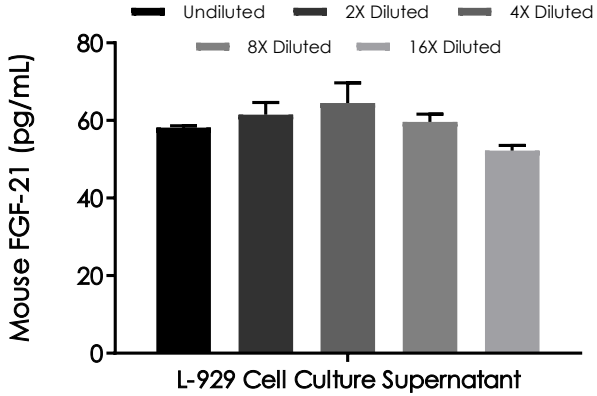
## PRECISION –

Mean coefficient of variations of interpolated values of FGF-21 from three concentrations of mouse serum within the working range of the assay.

	Intra-Assay	Inter-Assay
n =	5	3
CV(%)	3	4



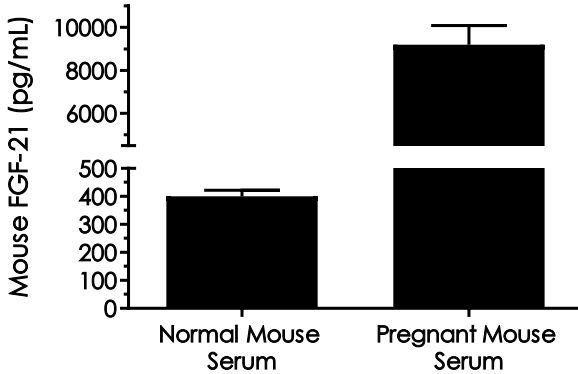
**Figure 2.** Interpolated concentrations of native FGF-21 in mouse serum and plasma samples. The concentrations of FGF-21 were measured in duplicates, interpolated from the FGF-21 standard curves and corrected for sample dilution. Undiluted samples are as follows: serum 100%, plasma (citrate) 100%, plasma (EDTA) 100%, and plasma (heparin) 50%. The interpolated dilution factor (to neat sample) corrected values are plotted (mean +/- SD, n=2). The mean FGF-21 concentration was determined to be 409 pg/mL in neat serum, 397 pg/mL in neat plasma (citrate), 358 pg/mL in neat plasma (EDTA), and 348 pg/mL in neat plasma (heparin).



**Figure 3.** Interpolated concentrations of native FGF-21 in untreated L-929 cell culture supernatant samples. The concentrations of FGF-21 were measured in duplicates, interpolated from the FGF-21 standard curves and corrected for sample dilution. Undiluted samples are as follows: L-929 cell culture supernatant 100%. The interpolated dilution factor corrected values are plotted (mean +/- SD, n=2). The mean FGF-21 concentration was determined to be 59 pg/mL in neat L-929 cell culture supernatant.

## 17. Assay Specificity

This kit recognizes both native and recombinant mouse FGF-21 protein in serum, plasma, and cell culture supernatant, cell and tissue extract samples only.



**Figure 4.** Interpolated concentrations of FGF-21 in normal female CD-1 mouse serum and pregnant female CD-1 mouse serum at day 18 of gestation. The concentrations of FGF-21 were measured in three different dilutions in duplicate and interpolated from the FGF-21 standard curve and corrected for sample dilution. The interpolated dilution factor corrected values are plotted in pg FGF-21 per mL of neat serum (mean +/- SD, n=3). FGF-21 concentration was determined to be 401 pg/mg in normal mouse serum, and 9,193 pg/mL in pregnant mouse serum.

Cell and tissue extract samples are not compatible with this kit.

### INTERFERENCE

Recombinant mouse FGF R3 and mouse FGF R4 were prepared at 50 ng/mL and 1 ng/mL and tested for interference. No interference with was observed.

## 18. Species Reactivity

This kit recognizes mouse FGF-21 protein.

Rat serum and plasma samples are not compatible with this kit.

Other species reactivity was determined by measuring 100% serum samples of various species, interpolating the protein concentrations from the mouse standard curve, and expressing the interpolated concentrations as a percentage of the protein concentration in mouse serum assayed at the same dilution.

Reactivity < 3% was determined for the following species:

- Human
- Cow

Please contact our Technical Support team for more information.



## 19. Troubleshooting

Problem	Reason	Solution
<b>Poor standard curve</b>	Inaccurate Pipetting	Check pipettes
	Improper standard dilution	Prior to opening, briefly spin the stock standard tube and dissolve the powder thoroughly by gentle mixing
<b>Low Signal</b>	Incubation times too brief	Ensure sufficient incubation times; increase to 2 or 3 hour standard/sample incubation
	Inadequate reagent volumes or improper dilution	Check pipettes and ensure correct preparation
	Incubation times with CatchPoint HRP Development Solution too brief	Read plate again after longer incubation time
<b>Large CV</b>	Plate is insufficiently washed	Review manual for proper wash technique. If using a plate washer, check all ports for obstructions.
	Contaminated wash buffer	Prepare fresh wash buffer
<b>Low sensitivity</b>	Improper storage of the ELISA kit	Store your reconstituted standards at -80°C, all other assay components 4°C. Keep Stoplight Red Substrate protected from light.
<b>Precipitate in Diluent</b>	Precipitation and/or coagulation of components within the Diluent.	Precipitate can be removed by gently warming the Diluent to 37°C.

# 20. Notes



## Technical Support

Copyright © 2021 Abcam, All Rights Reserved. The Abcam logo is a registered trademark. All information / detail is correct at time of going to print.

**For all technical or commercial enquiries please go to:**

[www.abcam.com/contactus](http://www.abcam.com/contactus)

[www.abcam.cn/contactus](http://www.abcam.cn/contactus) (China)

[www.abcam.co.jp/contactus](http://www.abcam.co.jp/contactus) (Japan)